

## WEB SITE



[Official Site]

[www.padico.co.jp](https://www.padico.co.jp)

New arrivals, product information, etc



[English Site]

<https://www.padico.co.jp/en/>

Official English Site



[Movie List]

<https://www.padico.co.jp/movie/>

Videos on how to create artworks and use products

## SNS



@PADICO\_JP

New arrivals, discontinued products, campaigns, and short videos



@jewellabyrinth

Instagram dedicated to resin crafts, including works and how to make them



@PADICOpadico

PADICO Official Facebook



@padico

Information by fax or email and how to make your work

**PADICO PADICO Co.,Ltd**

PADICO HEAD OFFICE : 1-11-11-408 Jinguumae, Shibuya-ku, 150-0001 Tokyo Japan Tel. +81-3-6804-5171  
FACTORY : 673-3 Jinba Gotemba, 412-0047, Shizuoka Japan Tel. +81-550-70-7030



## UV-LED Coating Resin Star Drop

Flowing, smooth coating resin  
Shimmering, lustrous liquid



Dip-type coating resin  
simply put resin items  
directly into the container!













Clearness to gather lots of light



*Gloss Coating*

Coating on aurora transfer film



Glass-like transparency and brilliance



Designs with pearls and rhinestones



Stone clay parts are colored and coated with the resin to create a ceramic look.

The matte finish on the clear side gives an elegant impression.



*Matte Coating*

Colored resin parts are matted to create a sea glass finish.



Expresses sheer accessories that are slightly translucent.



Washi paper is not shiny after coating with matte resin and the texture of the material remains.



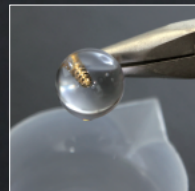
The matte texture, lame and holograms create a calm and cute look.



# 1 Highly transparency, low viscosity liquid resin for coating

The light liquid makes it easy to apply thinly. Also, there is little unpleasant odor characteristic of resin.

Beautiful finish when dipped directly into the liquid.



# 2 Yellowing-resistant coating resin

The UV-LED Coating Resin has strong yellowing resistance after curing.

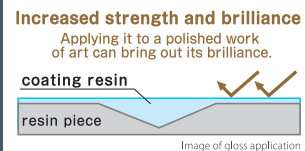


\*Discoloration characteristic of resin may occur due to aging.

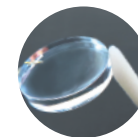


# 4 Scratch-resistant and shines like glass

The coating strengthens the surface and provides a hard finish. No stickiness after curing due to coating



This resin restores the beauty and brilliance of any work with a cloudy surface.



loss, Matte, two types of coating resins are launched. Fast curing time, hard finish, and no stickiness after curing

## GLOSS

Gloss type for glass-like transparency and brilliance

## MATTE

Matte type that expresses a frosted glass-like texture



UV-LED Coating Resin "Star Drop Gloss" 30g  
1,500 JPY without tax  
#403366 / JAN CODE: 4902498733667  
1 pc / weight: 52.5g  
Bottle size: φ28 mm x H116 mm  
Package size: W80 x D30 x H190 mm  
Quantity per box: 40 pcs



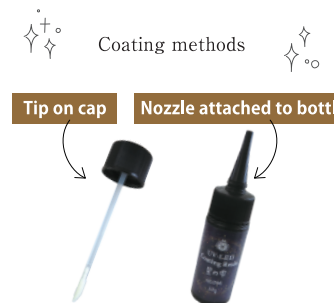
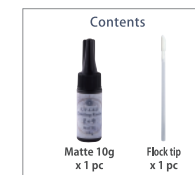
UV-LED Coating Resin "Star Drop Gloss" 10g  
600 JPY without tax  
#403368 / JAN CODE: 4902498733681  
1 pc / weight: 19g  
Bottle size: φ22 mm x H90 mm  
Package size: W62 x D25 x H150 mm  
Quantity per box: 50 pcs



UV-LED Coating Resin "Star Drop Matte" 30g  
1,500 JPY without tax  
#403367 / JAN CODE: 4902498733674  
1 pc / weight: 52.5g  
Bottle size: φ28 mm x H116 mm  
Package size: W80 x D30 x H190 mm  
Quantity per box: 40 pcs



UV-LED Coating Resin "Star Drop Matte" 10g  
600 JPY without tax  
#403369 / JAN CODE: 4902498733698  
1 pc / weight: 19g  
Bottle size: φ22 mm x H90 mm  
Package size: W62 x D25 x H150 mm  
Quantity per box: 50 pcs



## Features

- Low viscosity flowing liquid resin
- Hard finish and scratch resistant
- Easy to apply thinly
- Less unpleasant odor characteristic of resin
- Quick curing time
- No stickiness after curing due to coating
- Yellowing-resistant coating resin
- Beautiful finish when dipped directly into the liquid.
- Brush marks do not stick to the surface, and even can be applied even the detailed areas
- A small amount can be put out with a nozzle

\*Discoloration characteristic of resin may occur due to aging.

Coating liquid for thin coating. It is not suitable for thicker works.



New

Release on October 18th, 2024

New resin bottle allows you to dip resin piece directly into the bottle as it comes a deep container.

### GLOSS Dip



Dip 70g [Gloss]

### MATTE Dip



Dip 70g [Matte]

### Features

- Coating resin that can be dipped directly into the bottle.
- Large 70g capacity
- Deep size container with an inner mouth diameter of 57mm x inner height of approx. 67mm

### UV-LED Coating Resin Dip 70g [Gloss]

3,200 JPY without tax  
#403403 / JAN CODE: 4902498734039  
1 pc / weight: 118g  
Bottle size: φ69.4mm × H75.7mm

### Precautions

Wear gloves when opening/closing the inner cap, as the resin liquid may get on your hands.  
Hold the bottle down with one hand and slowly lift the cap to open to prevent the resin from splashing out.

### UV-LED Coating Resin Dip 70g [Matte]

3,200 JPY without tax  
#403404 / JAN CODE: 4902498734046  
1 pc / weight: 118g  
Bottle size: φ69.4mm × H75.7mm

### Size of container without lid



The amount of resin covers 1/2 of the size of the bottle.

- Use gloves to avoid skin contact with resin.
- Close the lid when not in use to avoid light and dust.
- Remove as much dust and debris as possible before dipping.



After use, wipe around the bottle and close the lid after putting on the inner cap.

If the cap does not close properly, close the lid from the top with keeping the cap in place.

### Set of Flock Tip Applicators For Easy Coatng & A Bottle Cap



5 flocking tips



1 bottle cap



1 bottle cap



Can be tipped inside the bottle!

### Features

- This cap size fits PADICO resin bottles and the 200g varnish bottles.
- Flock tip applicators are used to prevent air bubbles and brush marks.
- This applicator holds liquid well and can be applied thinly and thoroughly to fine areas.

### Flock Tip Applicators & Bottle Cap

400 JPY without tax  
#403364 / JAN: 4902498733643

1 pc / weight: 12g  
Package size: W100 × D19 × H155mm  
Materials: Bottle cap: PP Flock tips: PP, Nylon



### Bottle products that this cap supports

- UV-LED Resin Star Drop Series except 10g bottle
- UV-LED Resin Moon Drop Series
- UV-LED Resin Sun Drop Series
- UV-LED Coating Resin Star Drop Series except 10g bottle
- Ultra Varnish Series
- Super Exterior Varnish Series





## How to use the Coating Resin

### Coating with flock tip



1. Cut the flock tip at 2 cm from the bottom using nippers.



2. Insert the tip into the hole in the cap. Wipe off any resin adhering to the hole.



3. Apply with the flock tip. After applying, the tip can be stored in the bottle.

### Cleaning the tip



Wipe well with alcohol-type wet wipes

### Use flocking tips for

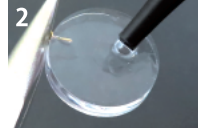
- Application to small areas
- Thin coating on the side

### Coating with a nozzle

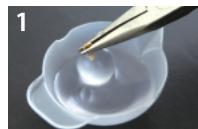


Put a small amount of resin directly from the nozzle and spread it with flocking tip.

1. Attach the included nozzle to the bottle.

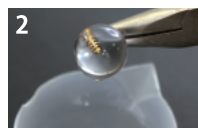


2. Put a small amount of resin directly from the nozzle and spread it with flocking tip.

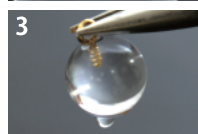


Fill the palette with resin and dip the work into the resin.

1. Set a nozzle on the bottle and pour the resin into the palette. Soak the work in the liquid using a pliers, etc.



2. Move and apply the resin so that it is spread over the entire surface.



3. Remove excess resin and cure the work with a UV-LED light.

### Use a nozzle for

- Wide application surface
- Dipping

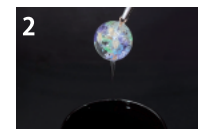


### Coating in dip resin bottle

- Use gloves to avoid skin contact with resin.
- Close the lid when not in use to avoid light and dust.
- Remove as much dust and debris as possible before dipping.



1. Hold the cured resin with a clip and dip it directly into the bottle.

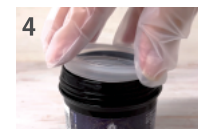


2. Take it out and pour off excess resin.

When applying a thin coating, excess resin can be removed by blowing air from a hand-heater.



3. Expose the resin work to a UV-LED light for 360 degrees while turning it. The dip resin bottle should be placed away from the light.



4. After use, wipe around the bottle and close the lid after putting on the inner cap. If the cap does not close properly, close the lid from the top with keeping the cap in place.

### Use the Dip Resin for

- Dipping various wire shapes and other small, dried objects directly in.

### Curing Time

- UV-LED light (6W-9W) 30 - 120 seconds
- UV light (36W) 2 - 4 minutes
- Bright sunlight 30 - 120 seconds
- Cloudy sunlight 3 - 10 minutes

\*Curing time depends on the work environment.

"Star Drop" UV-LED Coating Resin, common to all types

Color/ Clear	Storage temperature/ 0-25 °C
Ingredients/ Acrylic UV LED curable resin	Store out of direct sunlight
Use/ Coating agent for molding	Fire and Disaster Management Act (Japan)
	Class-4 Petroleum Dangerous Grade 3
	Hazard class III (non-aqueous liquid)

No open flames



### Caution

For matte type, shake the bottle gently and slowly before use. If not used for an extended period of time, the matting agent will precipitate. Use the included flocking tip to slowly stir the mixture before use.

- Temperature becomes high during curing. Do not touch it until it cools down.
- Take care to prevent the resin from adhering to skin, clothing, furniture, etc. Disposable gloves are recommended.
- Coating liquid for thin coating. It is not suitable for thicker works.

- The resin begins a slow curing reaction even under fluorescent light in a room or in the shade near the window.
- Do not leave this resin out for long periods of time.
- People with sensitive skin or those working in environments requiring caution should wear gloves and glasses.
- White gas may rarely occur during curing. This is due to the reaction of some of the resin components to vaporization caused by the curing heat. It is not particularly harmful. Please ventilate as usual.

- When applied to Moon Drop resin, the film may peel off due to its unique surface hardness. It is recommended to scratch the surface with sand paper #600 - #1000 before application.



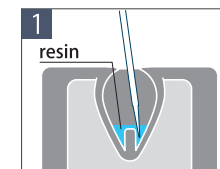
# Gloss & Matte Drop Earrings

Glasswork-like gloss texture and exquisite translucent matte texture, Earrings with two types of coated resin



## Materials · Tools

- Star Drop UV-LED Resin Hard Type
- UV-LED Coating Resin "Star Drop" Gloss and Matte
- Flock Tip Applicators
- UV-LED Lamp
- 3D Water Drop Silicone Mold
- Jewel Color Mixing Palette
- Mixing Stick
- Earring Parts
- Chain
- Eyebolts
- C shaped Jumpings



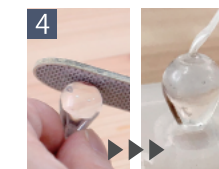
Put a small amount of resin on the tip of the stick and fill around the inner projection of the mold. Repeat a couple times.



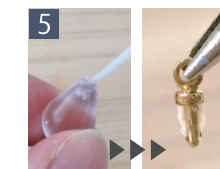
Check for air bubbles from underside of mold.



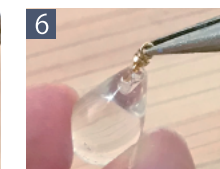
Pour the resin so that it does not leak just below the spout, then cure it with a UV-LED lamp. Remove from mold when cooled.



Deburr on the drop with sandpaper and apply resin to the concave area on the underside of the drop and shape it.



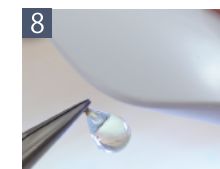
Put a small amount of resin on the tip of the bolt and the hole.



Stick the bolt in the hole and use a UV-LED lamp to glue it with resin.



Apply the gloss coating resin to the entire part with a flock tip.



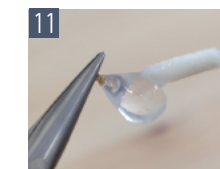
Cure it with UV-LED light while holding.



Repeat step 7 & 8.



Apply the matte coating resin to the entire part with a flock tip. Cure it with UV-LED light while holding.



Repeat step 10.



Attach accessory parts and finish the earrings.