



Official Site

www.padico.co.jp



English Site

<https://www.padico.co.jp/en/>



For more information about PADICO's resins,
please visit the following website.

[https://www.padico.co.jp/
uvled-resin2021/index.html](https://www.padico.co.jp/uvled-resin2021/index.html)



SNS



@PADICO_JP



@jewellabyrinth



@padico



@PADICOpadico

Please check for the latest 

PADICO PADICO Co.,Ltd

PADICO HEAD OFFICE : 1-11-11-408 Jinguumae, Shibuya-ku, 150-0001 Tokyo Japan Tel. +81-3-6804-5171
FACTORY : 673-3 Jinba Gotemba, 412-0047, Shizuoka Japan Tel. +81-550-70-7030

Cover artworks by tikyuuuya

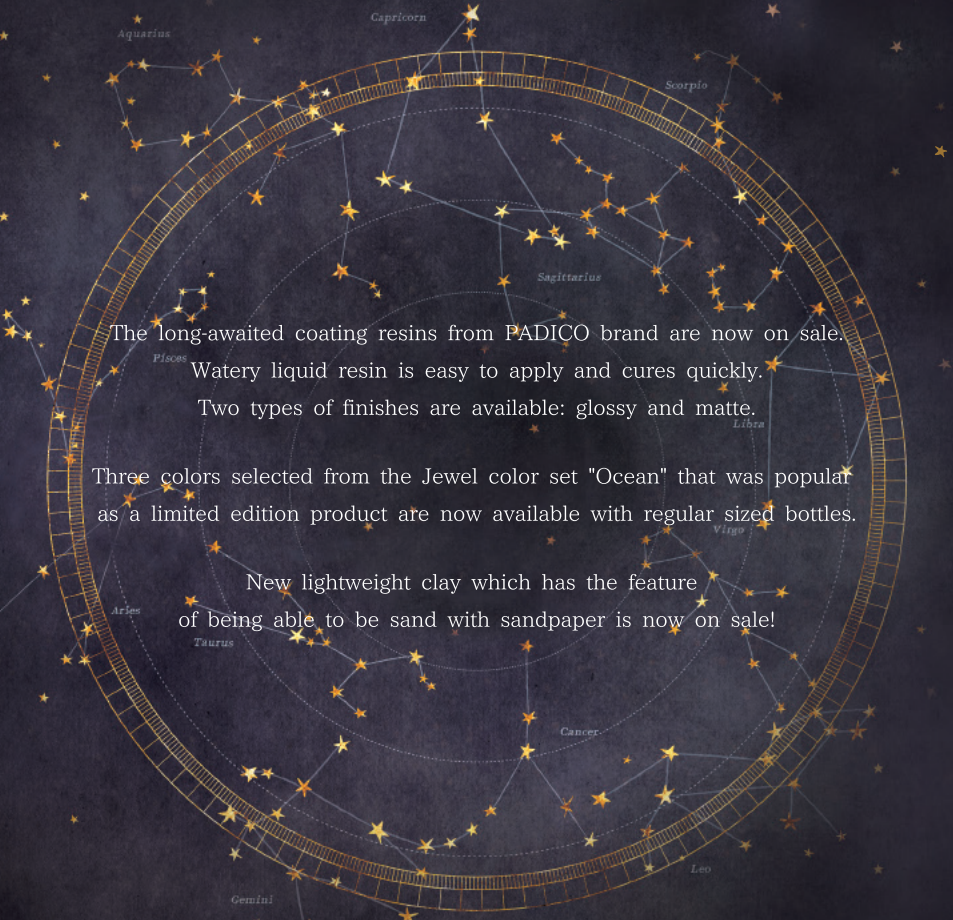
©2023 PADICO co.,Ltd. First edition published in April 2023 Printed in Japan 403373

New Products

PADICO New Products in May 2023



PADICO




The long-awaited coating resins from PADICO brand are now on sale.

Watery liquid resin is easy to apply and cures quickly.

Two types of finishes are available: glossy and matte.

Three colors selected from the Jewel color set "Ocean" that was popular as a limited edition product are now available with regular sized bottles.

New lightweight clay which has the feature of being able to be sand with sandpaper is now on sale!



Flowing, smooth coating resin
Shimmering, lustrous liquid



Matte texture

Gloss texture



Gloss texture



Matte texture

Gloss texture

Clearness to gather lots of light



Gloss Coating

Coating on aurora transfer film



The matte finish on the clear side gives an elegant impression.



Matte Coating

Colored resin parts are matted to create a sea glass finish.



Glass-like transparency and brilliance



Designs with pearls and rhinestones



Stone clay parts are colored and coated with the resin to create a ceramic look.

Expresses sheer accessories that are slightly translucent.



Washi paper is not shiny after coating with matte resin and the texture of the material remains.

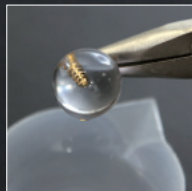


The matte texture, lame and holograms create a calm and cute look.

1 Highly transparency, low viscosity liquid resin for coating

The light liquid makes it easy to apply thinly. Also, there is little unpleasant odor characteristic of resin.

Beautiful finish when dipped directly into the liquid.



2 Yellowing-resistant coating resin

Applying a coating resin to a Star Drop resin piece will make it more resistant to yellowing over a longer period of time.



*Discoloration characteristic of resin may occur due to aging.

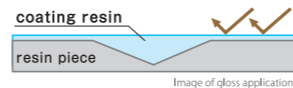


4 Scratch-resistant and shines like glass

The coating strengthens the surface and provides a hard finish. No stickiness after curing due to coating

Increased strength and brilliance

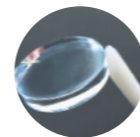
Applying it to a polished work of art can bring out its brilliance.



This resin restores the beauty and brilliance of any work with a cloudy surface.



Release on May 26th, 2023



Gloss, Matte, two types of coating resins are launched. Fast curing time, hard finish, and no stickiness after curing

GLOSS

Gloss type for glass-like transparency and brilliance

MATTE

Matte type that expresses a frosted glass-like texture

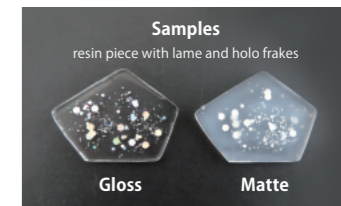


Flocked tip for easy application to small areas

Coating methods

Tip on cap

Nozzle attached to bottle



Features

- Low viscosity flowing liquid resin
- Hard finish and scratch resistant
- Easy to apply thinly
- Less unpleasant odor characteristic of resin
- Quick curing time
- No stickiness after curing due to coating
- Yellowing-resistant coating resin*
- Beautiful finish when dipped directly into the liquid.
- Brush marks do not stick to the surface, and even can be applied even the detailed areas
- A small amount can be put out with a nozzle

*Discoloration characteristic of resin may occur due to aging.

Coating liquid for thin coating. It is not suitable for thicker works.



30g

UV-LED Coating Resin "Star Drop Gloss" 30g

1,650 JPY (1,500 JPY without tax)
#403366 / JAN CODE: 4902498733667
1 pc, weight 52.5g
Bottle size: φ28 mm x H116 mm
Package size: W80 x D30 x H190 mm
Quantity per box: 40 pcs



10g

UV-LED Coating Resin "Star Drop Gloss" 10g

660 JPY (600 JPY without tax)
#403368 JAN CODE: 4902498733681
1 pc, weight 19g
Bottle size: 22 mm x H90 mm
Package size: W62 x D25 x H150 mm
Quantity per box: 50 pcs



30g

UV-LED Coating Resin "Star Drop Matte" 30g

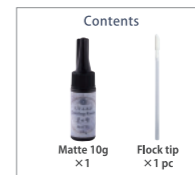
1,650 JPY (1,500 JPY without tax)
#403367 / JAN CODE: 4902498733674
1 pc, weight 52.5g
Bottle size: φ28 mm x H116 mm
Package size: W80 x D30 x H190 mm
Quantity per box: 40 pcs



10g

UV-LED Coating Resin "Star Drop Matte" 10g

660 JPY (600 JPY without tax)
#403369 JAN CODE: 4902498733698
1 pc, weight 19g
Bottle size: 22 mm x H90 mm
Package size: W62 x D25 x H150 mm
Quantity per box: 50 pcs



How to use the Coating Resin

Coating with flock tip



1. Cut the flock tip at 2 cm from the bottom using nippers.



2. Insert the tip into the hole in the cap. Wipe off any resin adhering to the hole.



3. Apply with the flock tip. After applying, the tip can be stored in the bottle.

Cleaning the tip



Wipe well with alcohol-type wet wipes

Use flocking tips for

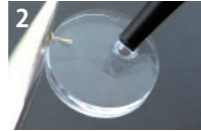
- Application to small areas
- Thin coating on the side

Coating with a nozzle

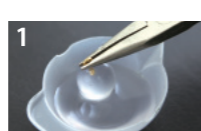


Put a small amount of resin directly from the nozzle and spread it with flocking tip.

1. Attach the included nozzle to the bottle.

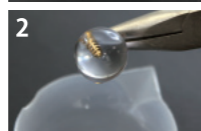


2. Put a small amount of resin directly from the nozzle and spread it with flocking tip.

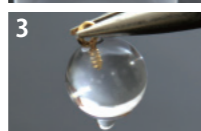


Fill the palette with resin and dip the work into the resin.

1. Set a nozzle on the bottle and pour the resin into the palette. Soak the work in the liquid using a pliers, etc.



2. Move and apply the resin so that it is spread over the entire surface.



3. Remove excess resin and cure the work with a UV-LED light.

Use a nozzle for

- Wide application surface
- Dipping

Curing Time

- UV-LED light (6W-9W) 30 - 120 seconds
- UV light (36W) 2 - 4 minutes
- Bright sunlight 30 - 120 seconds
- Cloudy sunlight 3 - 10 minutes

*Curing time depends on the work environment.

Caution

For matte type, shake the bottle gently and slowly before use. If not used for an extended period of time, the matting agent will precipitate. Use the included flocking tip to slowly stir the mixture before use.

- Temperature becomes high during curing. Do not touch it until it cools down.
- Take care to prevent the resin from adhering to skin, clothing, furniture, etc.
- Coating liquid for thin coating. It is not suitable for thicker works.

- The resin begins a slow curing reaction even under fluorescent light in a room or in the shade near the window.
- Do not leave this resin out for long periods of time.
- People with sensitive skin or those working in environments requiring caution should wear gloves and glasses.
- White gas may rarely occur during curing. This is due to the reaction of some of the resin components to vaporization caused by the curing heat. It is not particularly harmful. Please ventilate as usual.
- When applied to Moon Drop resin, the film may peel off due to its unique surface hardness. It is recommended to scratch the surface with sand paper #600 - #1000 before application.

Selling separately

Release on May 26th, 2023

Flock tip applicators & a bottle cap set for use with UV-LED coating resin



Bottle products that this cap supports

- UV-LED Resin Star Drop Series except 10g bottle
- UV-LED Resin Moon Drop Series
- UV-LED Resin Sun Drop Series
- UV-LED Coating Resin Star Drop Series except 10g bottle
- Ultra Varnish Series
- Super Exterior Varnish Series



Features

- This cap size fits PADICO resin bottles and the 200g varnish bottles.
- Flock tip applicators are used to prevent air bubbles and brush marks.
- This applicator holds liquid well and can be applied thinly and thoroughly to fine areas.

Flock Tip Applicators & Bottle Cap

440 JPY (400 JPY without tax)

#403364 / JAN CODE:4902498733643

1 pc, weight 12g

Package size: W100 x D19 x H155 mm

Materials: Bottle cap PP, Flock tips: PP & Nylon





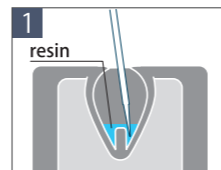
Gloss & Matte Drop Earrings

Glasswork-like gloss texture and exquisite translucent matte texture, Earrings with two types of coated resin



Materials · Tools

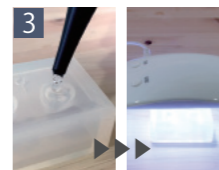
- Star Drop UV-LED Resin Hard Type
- UV-LED Coating Resin "Star Drop" Gloss and Matte
- Flock Tip Applicators
- UV-LED Lamp
- 3D Water Drop Silicone Mold
- Jewel Color Mixing Palette
- Mixing Stick
- Earring Parts
- Chain
- Eyebolts
- C shaped Jumpings



Put a small amount of resin on the tip of the stick and fill around the inner projection of the mold. Repeat a couple times.



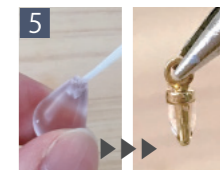
Check for air bubbles from underside of mold.



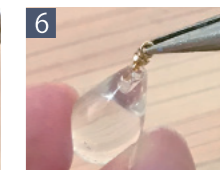
Pour the resin so that it does not leak just below the spout, then cure it with a UV-LED lamp. Remove from mold when cooled.



Deburr on the drop with sandpaper and apply resin to the concave area on the underside of the drop and shape it.



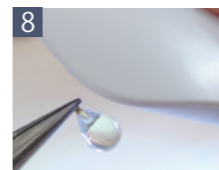
Put a small amount of resin on the tip of the bolt and the hole.



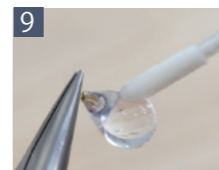
Stick the bolt in the hole and use a UV-LED lamp to glue it with resin.



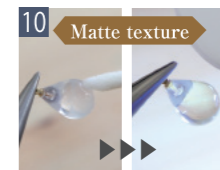
Apply the gloss coating resin to the entire part with a flock tip.



Cure it with UV-LED light while holding.



Repeat step 7 & 8.



Apply the matte coating resin to the entire part with a flock tip. Cure it with UV-LED light while holding.



Repeat step 10.



Attach accessory parts and finish the earrings.



Turquoise

Royal Blue
White (wave pattern)

Aqua Blue

Release on May 26th, 2023

Three blue colors selected from the limited edition "Jewel Clear Set Ocean" released in 2020 have been restored in 10 ml size bottles.



Turquoise

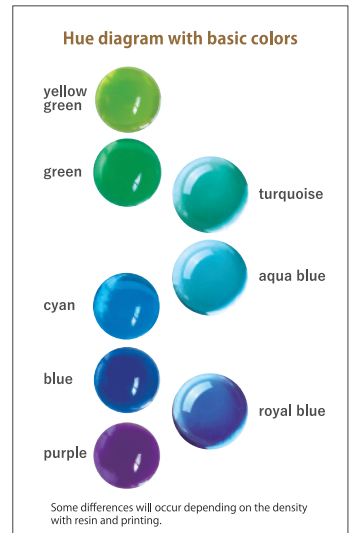
#403370
JAN: 4902498733704

Aqua blue

#403372
JAN: 4902498733728

Royal blue

#403371
JAN: 4902498733711



Features

- Made a popular color selected from "Ocean Set" into a standard product in a 10ml bottle size.
- Ideal for creating artwork inspired by the sea, sky, and outer space.
- Mix with resin for the best transparency.

Jewel Clear Color

Turquoise / Aqua Blue / Royal Blue <Restored>

528 JPY (480 JPY without tax)

1pc / 10ml

Bottle size: Φ22 mm x H62 mm

Package size: W70 x D23 x H130 mm



Turquoise

Aqua Blue

Royal Blue



Hard Calmo, soft lightweight clay, but when dried it becomes very hard and be sanded with sandpaper.



It is hard enough to file sandpaper.

Lightweight Clay
Hard Calmo
 440 JPY (400 JPY without tax)
 #101189 / JAN CODE: 4902498711894
 1 pc, weight 180g
 Bag size: W210 x D30 x H120mm
 30 pcs per box, weight 6kg
 Box size: W35 x D32 x H18 cm



Clay color: White

Release on May 12th, 2023

Hard Calmo, lightweight clay that does not stick to your hands, but can be sanded with sandpaper once it dries.



White clay allows for beautiful paint application.



Kaori Takahashi

Features

- Lightweight clay with a hard finish when completely dry
- Clay that can be sanded with sandpaper after drying
- Soft clay that does not stick to hands and is easy to handle
- Durable clay that keeps its shape
- Clay can be bonded well to other clay
- Clay can be kneaded with paint or painted after it dries



Provides a smooth and fine texture.



Using rolled newspaper as a core material, clay can be pasted to create large works of art.

Tips for use

- ① Kneading well makes it soft and easy to use.
 - ② The hardness can be adjusted by adding water to the clay.
 - ③ Wrinkles on the surface of the art work can be reduced with a small amount of water to smooth out before it dries.
 - ④ Air dry for 3 to 7 days. It depends on the thickness of the clay and the conditions in which it is placed.
- Excess clay should be wrapped in plastic wrap, sealed in a plastic bag, and stored in a cool place.
 - Use a bond to adhere the clay after drying.
 - Due to the characteristics of clay, it takes time to dry completely. Dry the inside well before processing.

Water Resistant Lightweight Clay



The water resistant clay is designed to withstand contact with small amounts of water. It cannot be used for works that will be soaked in water for a long period of time.

Created by: Haruko Igarashi [HP choco2to.wixsite.com/clay](http://choco2to.wixsite.com/clay)



Outside displays

Due to its water resistance at the level of daily life, it is not suitable for long time display.

Release on May 12th, 2023

Water-resistant air-dried clay "Tokenai-kun" is the substitute clay for Mermaid Puffy Clay.

Ex-model



Mermaid Puffy <White>

NEW



Water-resistant lightweight clay
Water Resistant Air Dry Clay White
 440 JPY (400 JPY without tax)
 #101192 / JAN CODE: 4902498711924
 1pc, weight 100g
 Bag size: W180 x D20 x H110mm
 40 pcs per box, weight 4.8 kg
 Box size: W42 x D34 x H14 cm



Clay color: White

Features

- When the clay dries completely, it is less soluble in water.
- Clay is lightweight, bendable, and durable finish.
- Resistant to water, the clay does not dissolve easily when wet.
- Soft clay that does not stick to hands and is easy to handle
- Clay does not warp easily when stretched thinly.
- Clay can be kneaded with paint or painted after it dries

Due to its water resistance at the level of daily life, it cannot be used for vases or underwater objects.

It is not suitable for long time display.

Acrylic paints are recommended for mixing and coloring.

Tips for use

- ① Kneading well makes it soft and easy to use.
- ② The hardness can be adjusted by adding water to the clay.
- ③ Wrinkles on the surface of the art work can be reduced with a small amount of water to smooth out before it dries.
- ④ Air dry for 3 to 7 days. It depends on the thickness of the clay and the conditions in which it is placed.

■ Excess clay should be wrapped in plastic wrap, sealed in a plastic bag, and stored in a cool place.

■ Use a bond to adhere the clay after drying.